

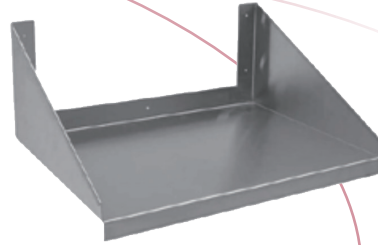


Equipment for the Foodservice Industry

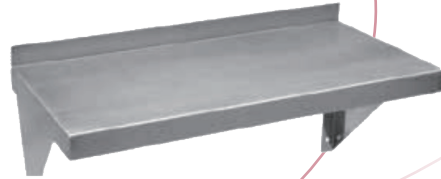
value + quality + service

Stainless Steel Wall Mount Shelves

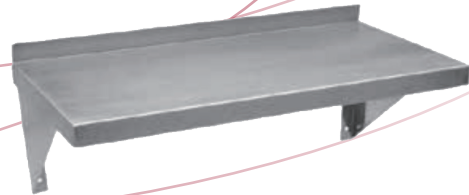
WMMS-18-24



WMS-12-24



WMS-14-36



Stainless Steel Wall Mount Shelves

Features

Features:

- Made with 18 gauge, Type 430 stainless steel
- Easy assembly and installation
- Safe and durable
- Wall mounting hardware not included
- Steel is reinforced to meet or exceed industry standards

Product Information:

- All units 72" and over include an additional center support (Not shown)



Stainless Steel Wall Mount Shelves Specifications

WALL MOUNT MIRCOWAVE SHELIVING

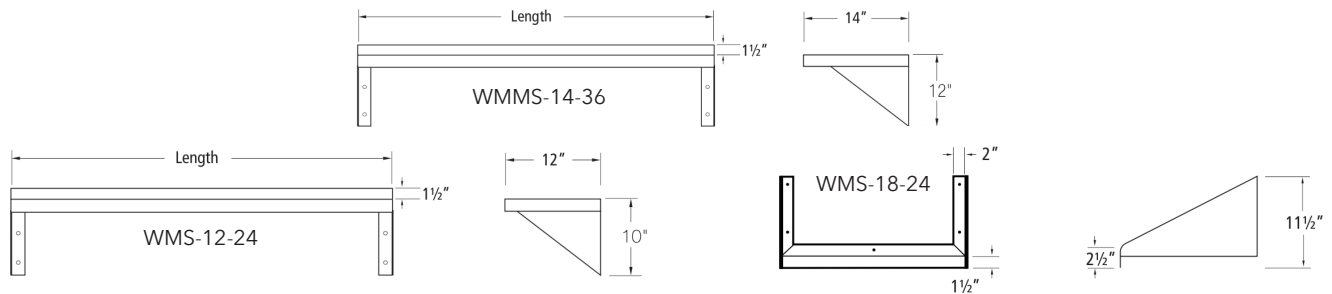
Product #	Shelf Width	Quantity in Box	Shipping Dimensions			Weight (lb)
			W"	D"	H"	
WMMS-18-24	24"	1	25	20	11	8
WMMS-24-24	24"	1	25	26	11	10

12"WALL MOUNT SHELIVING

Product #	Shelf Width	Quantity in Box	Shipping Dimensions			Weight (lb)
			W"	D"	H"	
WMS-12-24	24"	1	26	13	4	8
WMS-12-36	36"	1	38	13	4	10
WMS-12-48	48"	1	50	13	4	12
WMS-12-60	60"	1	62	13	4	14
WMS-12-72	72"	1	74	13	4	16
WMS-12-84	84"	1	86	13	4	18
WMS-12-96	96"	1	98	13	4	20

14"WALL MOUNT SHELIVING

Product #	Shelf Width	Quantity in Box	Shipping Dimensions			Weight (lb)
			W"	D"	H"	
WMS-14-24	24"	1	26	15	4	12
WMS-14-36	36"	1	38	15	4	14
WMS-14-48	48"	1	50	15	4	17
WMS-14-60	60"	1	62	15	4	19
WMS-14-72	72"	1	74	15	4	22
WMS-14-84	84"	1	86	15	4	24
WMS-14-96	96"	1	98	15	4	27



Specifications subject to change without notice.