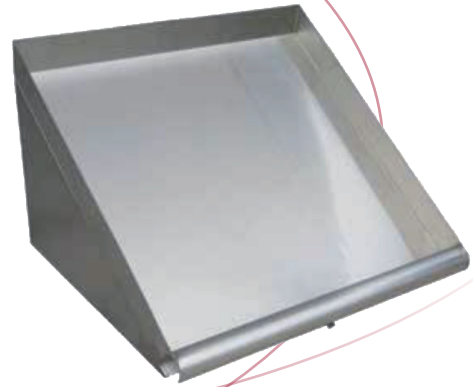




Equipment for the Foodservice Industry
value + quality + service

Slanted Wall Mounted Dish Racks



Slanted Wall Mounted Dish Racks

Features

Features:

- Made with 18 gauge, Type 304 stainless steel
- All corners are fully welded and polished to match finish
- Brackets attached to slanted shelf with 3 fuse studs with caps
- All inside vertical corners to have a minimum radius = 1/8"
- Built-in drain point
- Back lip is 2 3/16"
- Sides are 2"
- Wall mounting hardware is not included
- Front has a 1 1/2" rolled front

Product Information:

- All units 72" and over include an additional center support (Not shown)

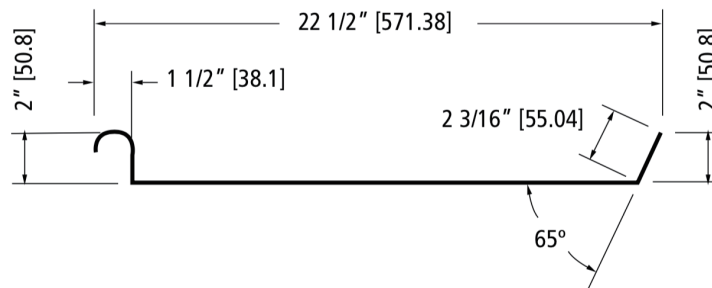


Slanted Wall Mounted Dish Racks Specifications

Slanted Wall Mounted Dish Racks

Product #	Shelf Width	Quantity in Box	Shipping Dimensions			Weight (lb)
			W"	D"	H"	
SEWDR-21	21"	1	23	24	3	15
SEWDR-42	42"	1	44	24	3	23
SEWDR-63	63"	1	65	24	3	30
SEWDR-72	72"	1	74	24	3	35
SEWDR-84	84"	1	86	24	3	39

Dish Rack Section View



Specifications subject to change without notice.