

**efi** sales Ltd.

Equipment for the Foodservice Industry  
value + quality + service

## ENCLOSED TRANSPORT RACKS



CBE401



### ENCLOSED TRANSPORT RACKS

#### Features

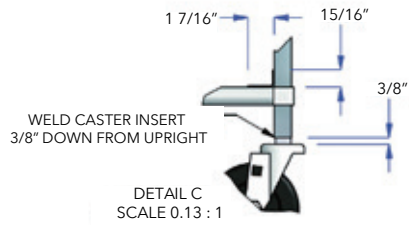
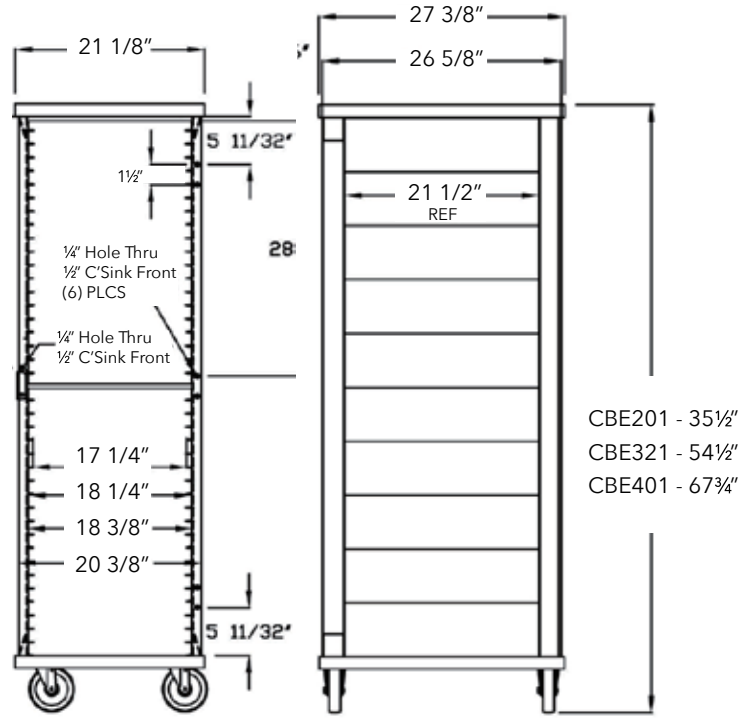
Features:

- Double pan construction with reinforced braces, 1½" space between runners
- Available in a variety of sizes
- Used to transport and store goods while slowing the dehydration process
- Made with welded, reinforced non-insulated aluminum
- Clean and rustproof



**ENCLOSED TRANSPORT RACKS**

**Specifications**



Product #	# of Slides	Shipping Dimensions			Weight (lbs)
		L"	W"	H"	
CBE201	20	36	21	28	74
CBE321	32	55	21	28	100
CBE401	40	68	21	28	112

Specifications subject to change without notice.