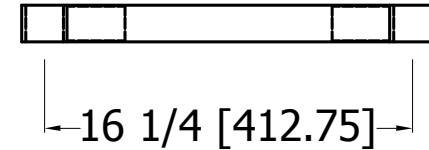
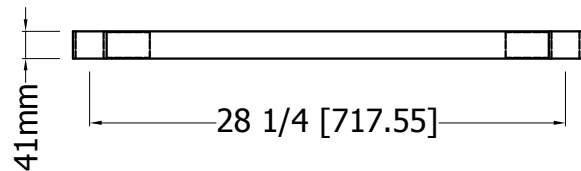


aluminum die cast



**TUS2436**

Specification

430SS/18GA under shelf  
w/ aluminum die casting

Model

Date

2025 5.24



**EFI EAST**  
515 Hanlon Creek Blvd  
Guelph, ON N1C 0A1  
T: (519) 822-1895

**EFI WEST**  
26895 Gloucester Way  
Langley, BC V4W 3Y3  
T: (604) 607-8850

[www.efifoodequip.com](http://www.efifoodequip.com)