



This Space for Architect/Engineer Approval

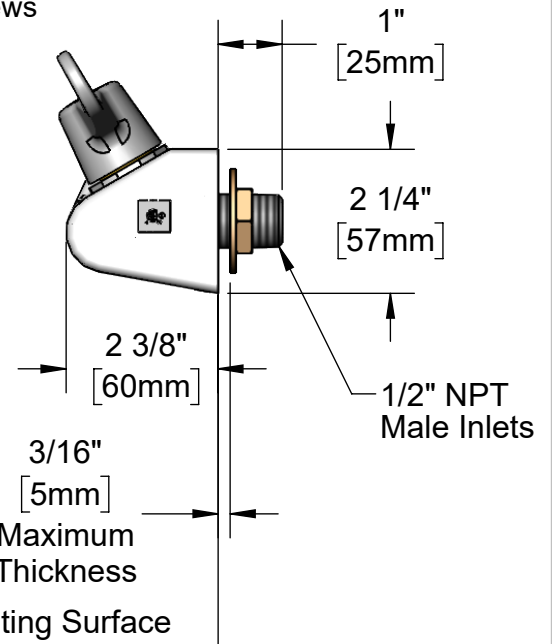
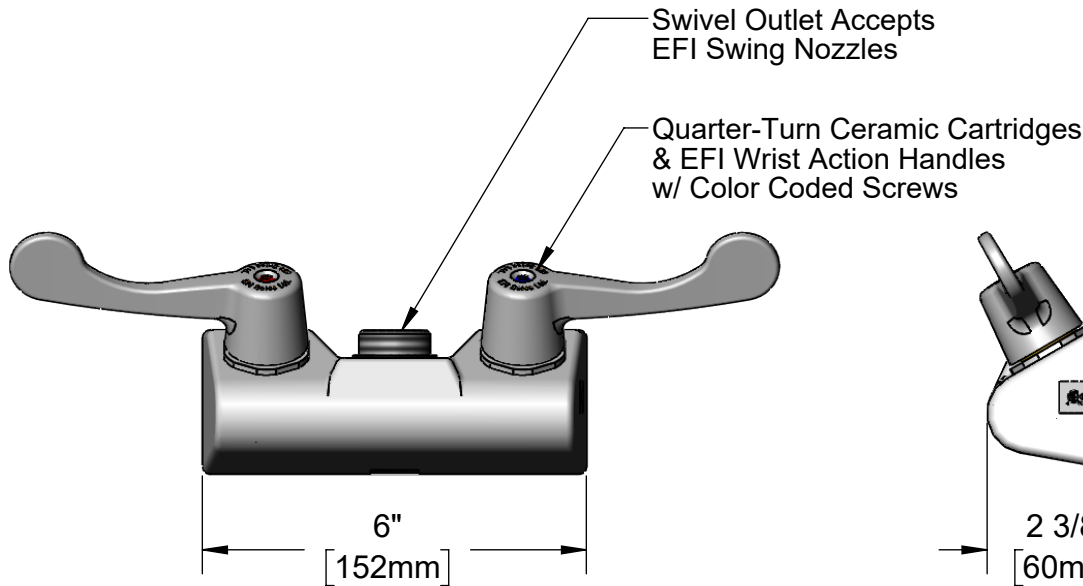
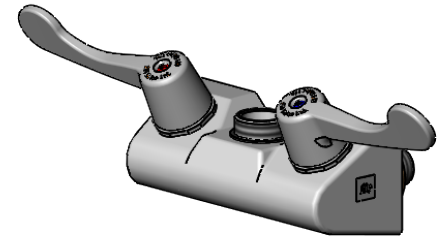
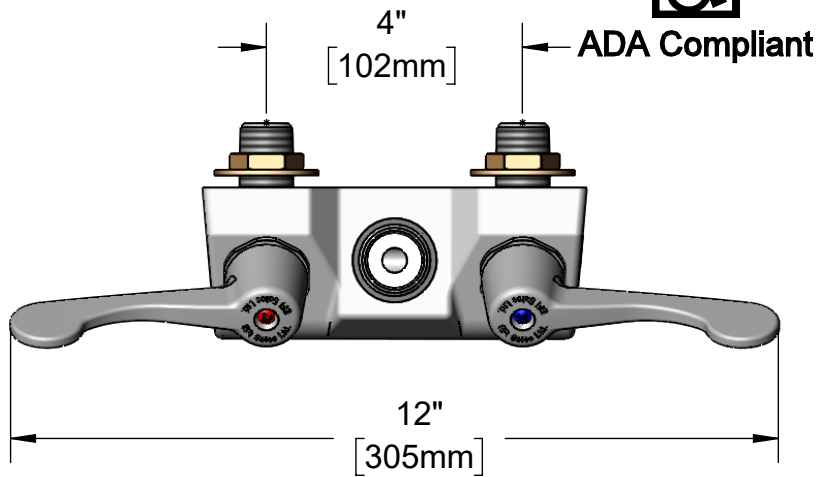
Job Name _____ Date _____

Model Specified _____ Quantity _____

Customer/Wholesaler _____

Contractor _____

Architect/Engineer _____



Rough-In Requirement:
(2) \varnothing 1" [25mm] Mounting Holes

Model Number

SIF-F4WW00

Product Specifications:

4" Wall Mount Mixing Faucet, Less Nozzle, Quarter-Turn Ceramic Cartridges, EFI Wrist Action Handles & 1/2" NPT Male Inlets

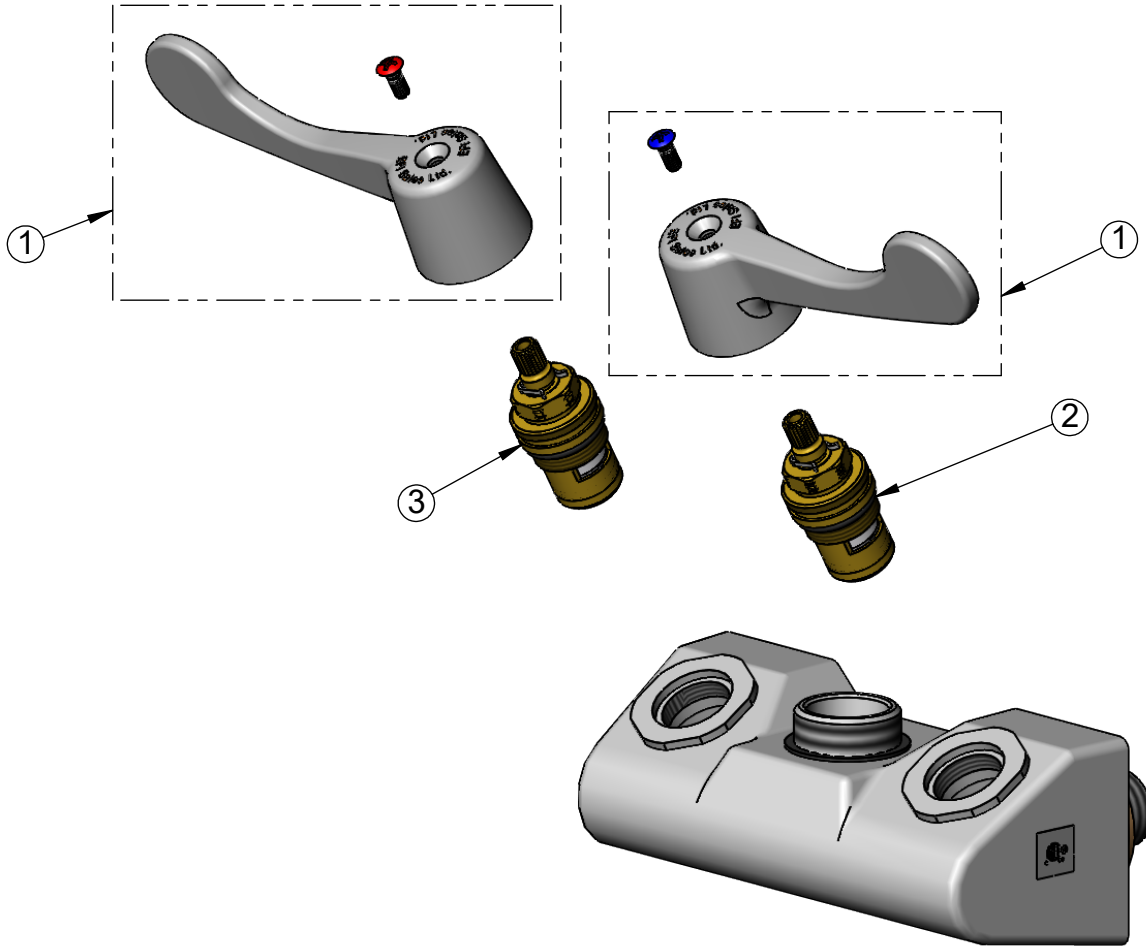
Product Compliance:

ASME A112.18.1 / CSA B125.1
NSF 61 - Section 9
NSF 372 (Low Lead Content)
ANSI A117.1 (ADA)



26895 Gloucester Way
Langley BC V4W 3Y3
Toll Free: 1.888.565.9020
Phone: 604.607.8850
ERIfloodequip.com

ITEM NO.	SALES NO.	DESCRIPTION
1	SIF-WA4	EFI Wrist Action Handle w/ Color Coded Screws
2	013788-45	Quarter-Turn Ceramic Cartridge, LTC
3	013787-45	Quarter-Turn Ceramic Cartridge, RTC



Model Number

SIF-F4WW00

Product Specifications:

4" Wall Mount Mixing Faucet, Less Nozzle, Quarter-Turn Ceramic Cartridges, EFI Wrist Action Handles & 1/2" NPT Male Inlets

Product Compliance:

ASME A112.18.1 / CSA B125.1
NSF 61 - Section 9
NSF 372 (Low Lead Content)
ANSI A117.1 (ADA)

efi sales Ltd

26895 Gloucester Way
Langley BC V4W 3Y3
Toll Free: 1.888.565.9020
Phone: 604.607.8850
ERIfloodequip.com