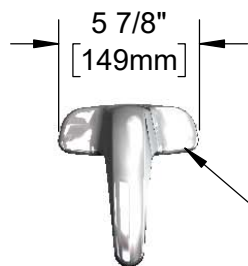




ADA Compliant



Polish Chrome Plated
Cast Spout w/ 2.2 GPM
Vandal Resistant
Aerator & Key



This Space for Architect/Engineer Approval

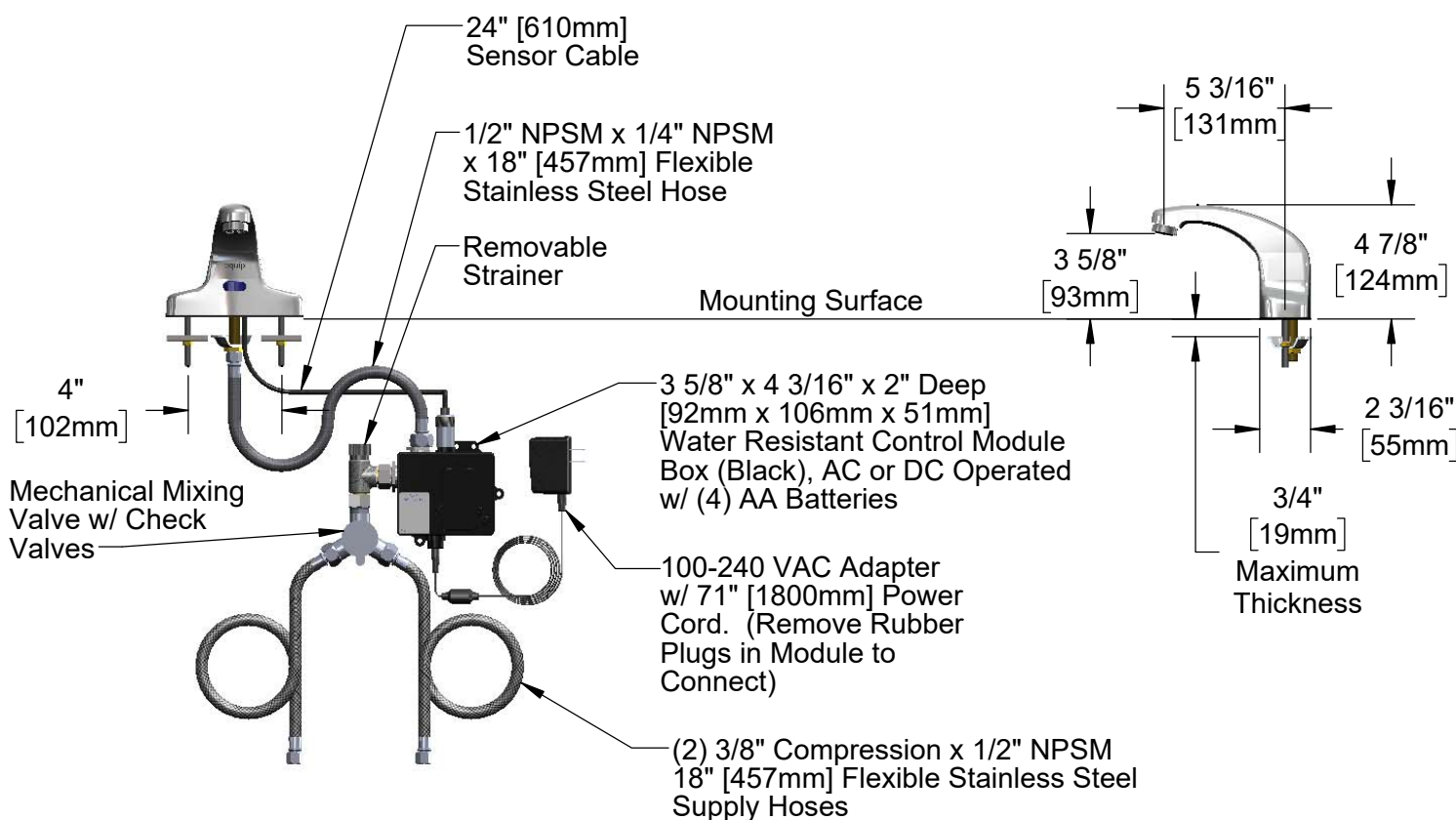
Job Name _____ Date _____

Model Specified _____ Quantity _____

Customer/Wholesaler _____

Contractor _____

Architect/Engineer _____



Rough-In Requirement:

- (1) \varnothing 1" [25mm] Center Shank Mounting Hole
- (2) \varnothing 1/2" [13mm] Mounting Stud Holes on 4" [102mm] Centers

Model Number

SIF-5EF-2D-DS

Product Compliance:

ASME A112.18.1 / CSA B125.1
NSF 61 - Section 9
NSF 372 (Low Lead Content)
ANSI A117.1 (ADA)
UL 1951

Product Specifications:

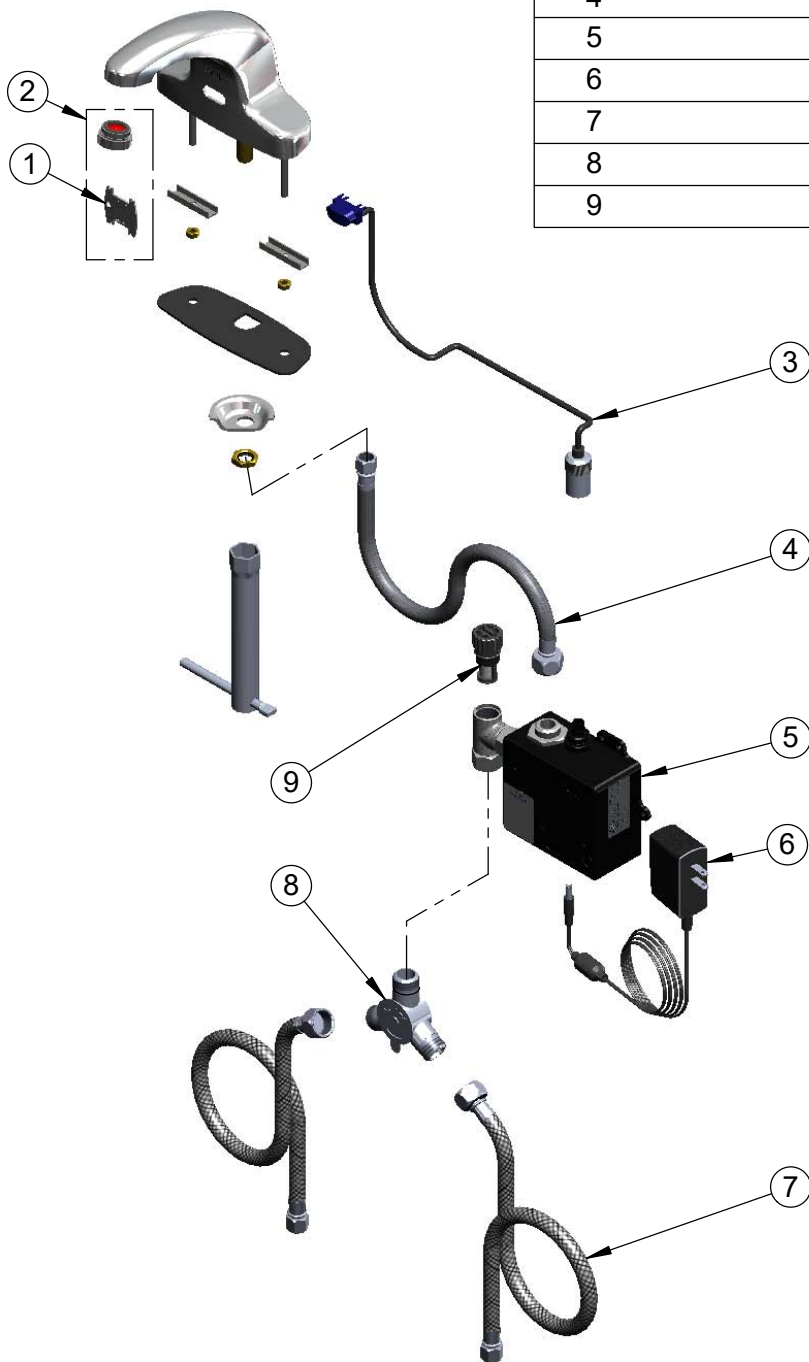
Electronic Faucet: 4" Deck Mount Cast Spout Faucet,
AC-DC Control Module, Temperature Control Mixing Valve,
Check Valves & (2) 18" Flexible Supply Hoses



26895 Gloucester Way
Langley BC V4W 3Y3
Toll Free: 1.888.565.9020
Phone: 604.607.8850
efifoodequip.com

Drawn: KJG Checked: JRM Approved: JHB Date: 09/10/18 Scale: 1:8 Sheet: 1 of 2

ITEM NO.	DESCRIPTION
1	Vandal Resistant Key
2	VR 2.2 GPM Aerator, 15/16-27 Male w/ Key
3	24" Sensor Cable
4	Inlet Hose, Faucet, 1/2" NPSM-F x 1/4" NPSM-F
5	equip Sensor Faucet Control Module
6	equip AC Transformer, 100-240 VAC
7	Supply Hose, 9/16-24 Female x 1/2" NPSM
8	Mechanical Mixing Valve
9	Replacement Filter



Model Number

SIF-5EF-2D-DS

Product Specifications:

Electronic Faucet: 4" Deck Mount Cast Spout Faucet,
AC-DC Control Module, Temperature Control Mixing Valve,
Check Valves & (2) 18" Flexible Supply Hoses

Product Compliance:

ASME A112.18.1 / CSA B125.1
NSF 61 - Section 9
NSF 372 (Low Lead Content)
ANSI A117.1 (ADA)
UL 1951

efi sales Ltd

26895 Gloucester Way
Langley BC V4W 3Y3
Toll Free: 1.888.565.9020
Phone: 604.607.8850
efifoodequip.com

Drawn: KJG Checked: JRM Approved: JHB Date: 09/10/18 Scale: NTS Sheet: 2 of 2