

This Space for Architect/Engineer Approval

Job Name _____ Date _____

Model Specified _____ Quantity _____

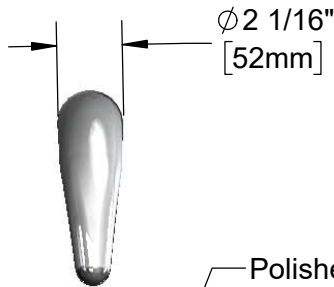
Customer/Wholesaler _____

Contractor _____

Architect/Engineer _____



ADA Compliant



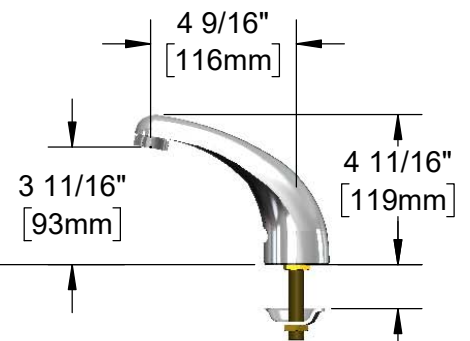
Ø 2 1/16"
[52mm]

Polished Chrome
Plated Solid Brass
Cast Spout w/ 2.2
GPM [8.3 LPM] Vandal
Resistant Aerator & Key

24" [610mm]
Sensor Cable

1/4" NPSM Female x 1/2" NPSM
Female x 18" [457mm] Flexible
Stainless Steel Hose

Removable Strainer
Mounting Surface



3 5/8" x 4 3/16" x 2"
[92mm x 106mm x 51mm]
Deep Control Module Box
(Black) w/ Water Resistant
Connections. AC or DC
Operated w/ (4) AA Batteries

100-240 VAC Adapter
71" [1800mm] Power
Cord. (Remove Rubber
Plug in Module to Connect)

(2) 3/8" Compression x 1/2" NPSM
18" [457mm] Flexible Stainless Steel
Supply Hoses

Mechanical Mixing Valve
w/ Check Valves

Rough-In Requirement:
Ø 1 1/4" [32mm] Mounting Hole

Model Number

SIF-5EF-1D-DS

Product Compliance:

ASME A112.18.1 / CSA B125.1
NSF 61 - Section 9
NSF 372 (Low Lead Content)
ANSI A117.1 (ADA)
UL 1951

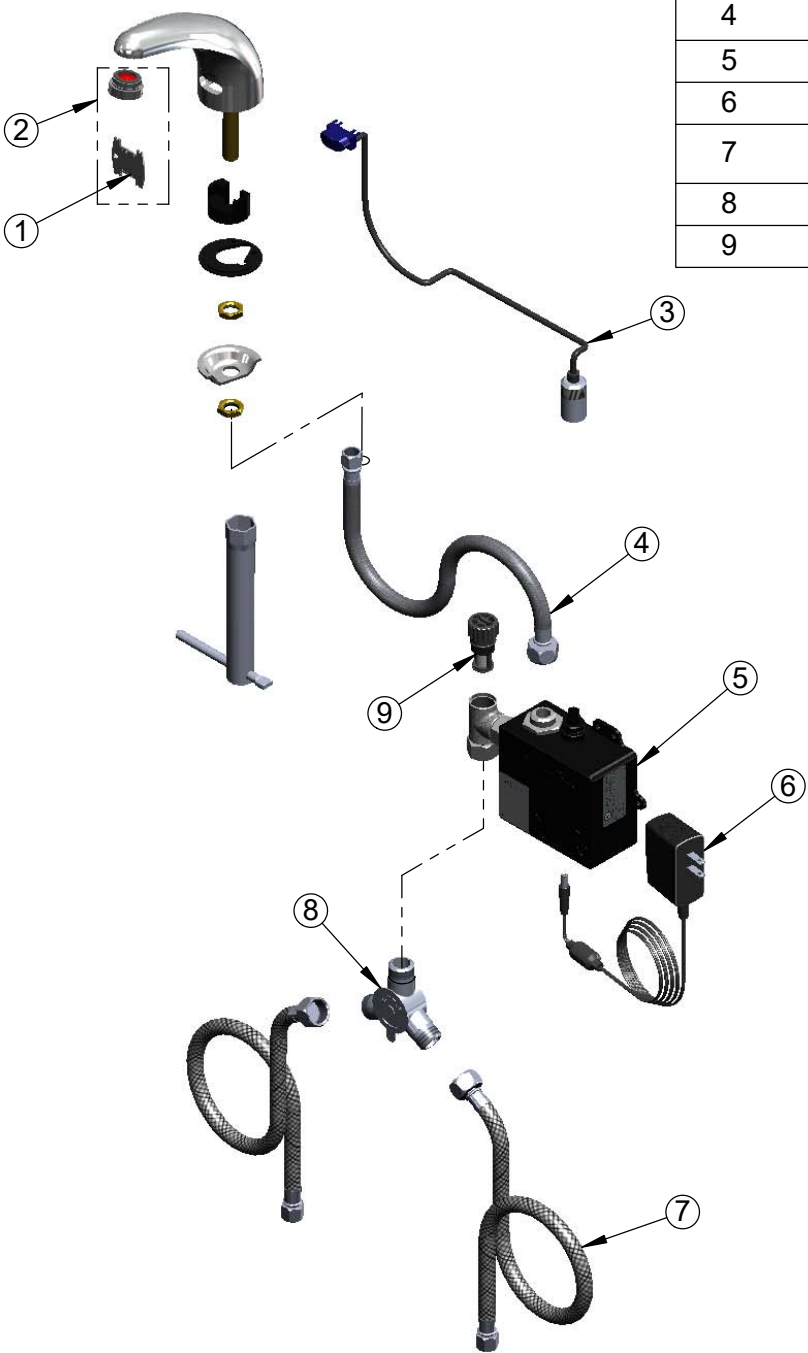
Product Specifications:

Electronic Faucet: Single Hole Deck Mount Cast Spout
Faucet, AC-DC Control Module, Temperature Control Mixing
Valve, Check Valves & (2) 18" Flexible Supply Hoses



26895 Gloucester Way
Langley BC V4W 3Y3
Toll Free: 1.888.565.9020
Phone: 604.607.8850
efifoodequip.com

Drawn: KJG Checked: JRM Approved: JHB Date: 09/10/18 Scale: 1:6 Sheet: 1 of 2



ITEM NO.	DESCRIPTION
1	Vandal Resistant Key
2	VR 2.2 GPM Aerator, 15/16-27 Male w/ Key
3	24" Sensor Cable
4	Inlet Hose, Faucet, 1/2" NPSM-F x 1/4" NPSM-F
5	equip Sensor Faucet - Control Module
6	equip AC Transformer, 100-240 VAC
7	Supply Hose, 9/16-24UN Female x 1/2" NPSM
8	Mechanical Mixing Valve
9	Replacement Filter

Model Number

SIF-5EF-1D-DS

Product Compliance:

ASME A112.18.1 / CSA B125.1
NSF 61 - Section 9
NSF 372 (Low Lead Content)
ANSI A117.1 (ADA)
UL 1951

Product Specifications:

Electronic Faucet: Single Hole Deck Mount Cast Spout Faucet, AC-DC Control Module, Temperature Control Mixing Valve, Check Valves & (2) 18" Flexible Supply Hoses



26895 Gloucester Way
Langley BC V4W 3Y3
Toll Free: 1.888.565.9020
Phone: 604.607.8850
efifoodequip.com