



Equipment for the Foodservice Industry

value + quality + service

STANDARD ICE BINS



SIIB1830D



STANDARD ICE BINS

Features

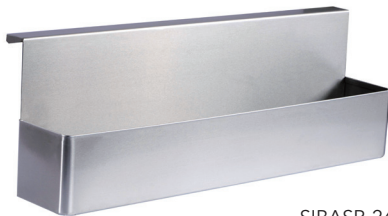
Features:

- 20 gauge, Type 304 stainless Steel
- 1" drain hole
- Legs and sockets are made with galvanized steel durability and economy
- Ship unassembled
- Available in two depths
- Comes with plastic bottle holder
- All TIG welded
- Welded areas are blended to a satin finish to match adjacent surfaces

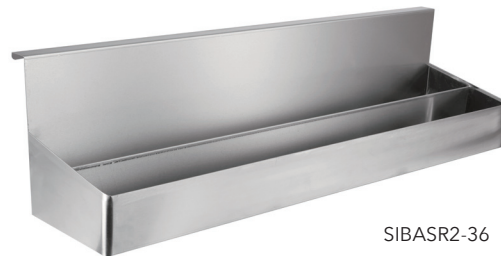


STANDARD ICE BINS**Specifications****STANDARD ICE BINS**

Product #	Width	Bin Depth	Overall Depth	Left Side Drain	Leg Size	Shipping Dimensions			Weight (lbs)
						W"	D"	H"	
SIIB1824	2'-0"	12"	13.5"	12"	16.5"	26	20	19	31
SIIB1830	2'-6"	12"	13.5"	15"	16.5"	32	20	19	36
SIIB1836	3'-0"	12"	13.5"	18"	16.5"	36	20	19	40
SIIB1824D	2'-0"	15"	16.5"	12"	13.5"	26	20	22	33
SIIB1830D	2'-6"	15"	16.5"	15"	13.5"	30	20	22	38
SIIB1836D	3'-0"	15"	16.5"	18"	13.5"	36	20	22	42



SIBASR-24



SIBASR2-36

BAR SINK SPEED RAILS - SINGLE

Product #	Description
SIBASR-24	24" single tier speed rail for bar sink
SIBASR-30	30" single tier speed rail for bar sink
SIBASR-36	36" single tier speed rail for bar sink
SIBASR-48	48" single tier speed rail for bar sink

BAR SINK SPEED RAILS - DOUBLE

Product #	Description
SIBASR2-24	24" double tier speed rail for bar sink
SIBASR2-30	30" double tier speed rail for bar sink
SIBASR2-36	36" double tier speed rail for bar sink
SIBASR2-48	48" double tier speed rail for bar sink

Specifications subject to change without notice.