



**VERSA
PREMIER**

CWDW2-48VCP

COOLER 2DW 1DR WORKTOP S/S 48in



WARRANTY:
TWO YEAR PARTS AND
LABOUR; FIVE YEARS ON
COMPRESSOR

SPECIFICATIONS SUBJECT TO
CHANGE WITHOUT NOTICE.

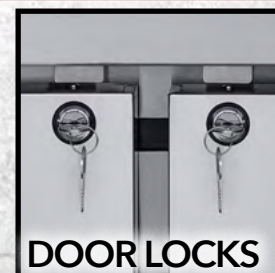


CWDW2-48VCP

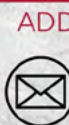
48 INCH 2 DRAWER 1 DOOR REFRIGERATION WORKTOP

- Premium quality materials and craftsmanship
- Finger-print resistant heavy-gauge Stainless Steel exterior finish
- Clear coated Aluminum Liner
- Adjustable Heavy-Duty Epoxy coated shelves
- Casters for easy movement
- Locking Doors
- Magnetic door gaskets
- Recessed door handles
- Worktop backsplash
- Sophisticated Digital Controller to ensure steady temp range from 33 to 40°F (0 to 4°C)
- Positive Seal self-closing doors w/stay open feature
- Automatic defrost system
- Environmentally friendly R290 hydro carbon refrigerant
- Exclusive low maintenance evaporator coil
- Bluetooth and Wi-Fi connectivity ready
- Available *EFI Cold Connect™* Monitoring Service (extra charge applies)
- Extended 5-year warranty included with *EFI Cold Connect™* subscription

ADDITIONAL IMAGES



MODEL DESIGNATIONS



ADDITIONAL RESOURCES

DIMENSIONS

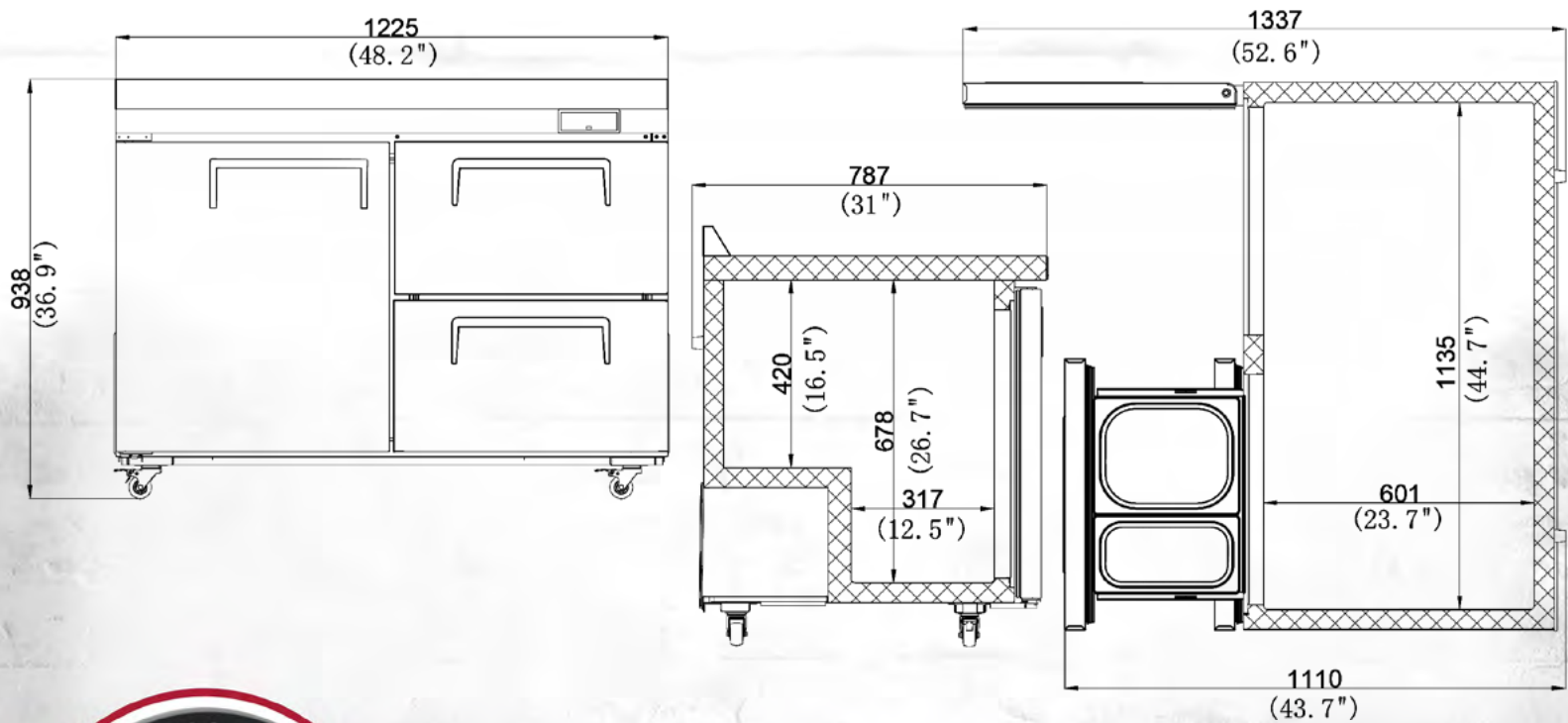
Dimensions	Width		Depth		Height		Weight	
	Inches	mm	Inches	mm	Inches	mm	Lbs	KG
Exterior	48.2	1,225.0	31.0	787.0	36.9	938.0	-	-
Shipping	50.0	1,272.0	31.9	810.0	43.2	1,096.0	-	-
Interior	44.7	1,135.0	23.7	601.0	26.7	678.0		

TECHNICAL

Pans	Capacity	Doors	Shelves	Casters	HP	Amps	Voltage	Refrig	Plug	Cord len
0	313.2/11.1	1	1	2"	1/6	1.7	115	R290	5-15P	≥1.8m



LINE DRAWINGS



EFI Sales Ltd.
Toronto Office & DC
515 Hanlon Creek Blvd.
Guelph, ON, N1C 0A1

EFI Sales Ltd.
Vancouver Office & DC
26895 Gloucester Way
Langley, BC, V4W 3Y3

(888) 565-9920 Toll Free
(519) 822-1895 Toronto
(604) 607-8850 Vancouver